

# Lynchburg, VA Urban Proposal

Architecture studio project

**The brief:** visit the city of Lynchburg, VA and document its urban life. Design an architectural feature that demonstrates how the city can be improved.

**Problem identification:** through photographing and taking notes on the city, I noticed a variety of building functions in close proximity to each other – for example, a bakery next to a tattoo parlor and a corporate office. But this building diversity seemed to have little effect on the flow of pedestrians. Flat storefronts with little variation in depth made it easy to walk right past adjacent businesses without noticing them.

From my experience in lively urban areas, I recalled how certain architecture could encourage meandering – visitation of multiple places instead of “one-and-done” trips. A couple may decide to peruse the record store after lunch; an employee may plan on visiting the coffee shop reliably close to the workplace.

I decided to focus my project on improving social and economic connectivity by encouraging pedestrians to make multiple stops.

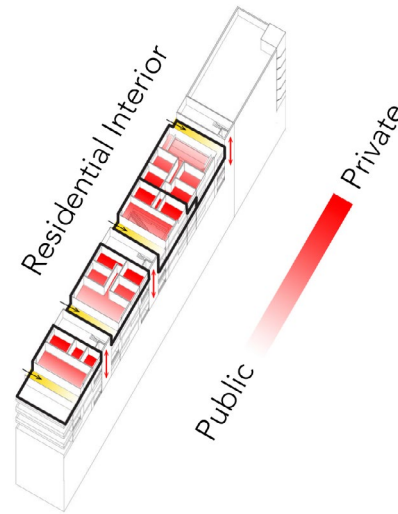


**Collaborative work:** before each team member came up with their own design, we explored the layout and demographics of Lynchburg as a group. Using ArchGIS, we obtained a detailed city map and examined water features, building density, and other points of interest. We then printed the map and glued it to foam core to serve as the ground plane of our model.

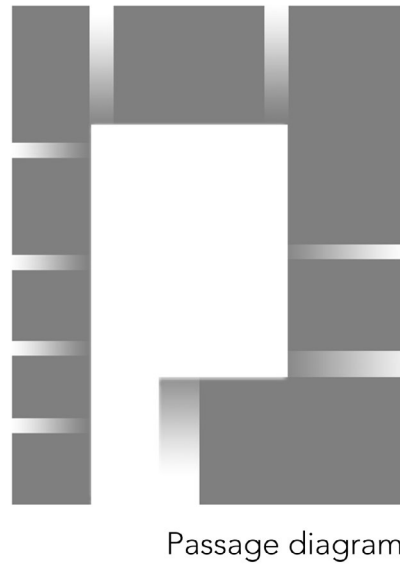
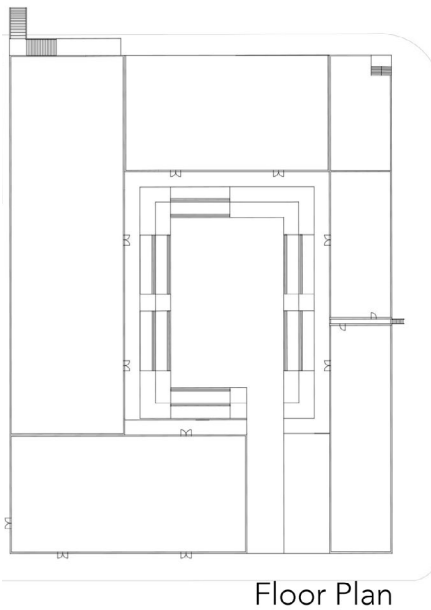
Using outlines on the map, we cut out the river area before gluing the foam core to the model's base.

To highlight prominent buildings, we cut wood in the wood shop and glued the pieces onto their corresponding building footprints.

Finally, we used varying densities of push pins to convey relative population density. We used string to wrap around each distinct pin area, with different color combinations representing different demographics.



**My solution:** a mixed-use complex comprised of four buildings – residential, business, retail, and recreational – with a central courtyard as a shared space. Each building includes views into courtyard and out toward the street.

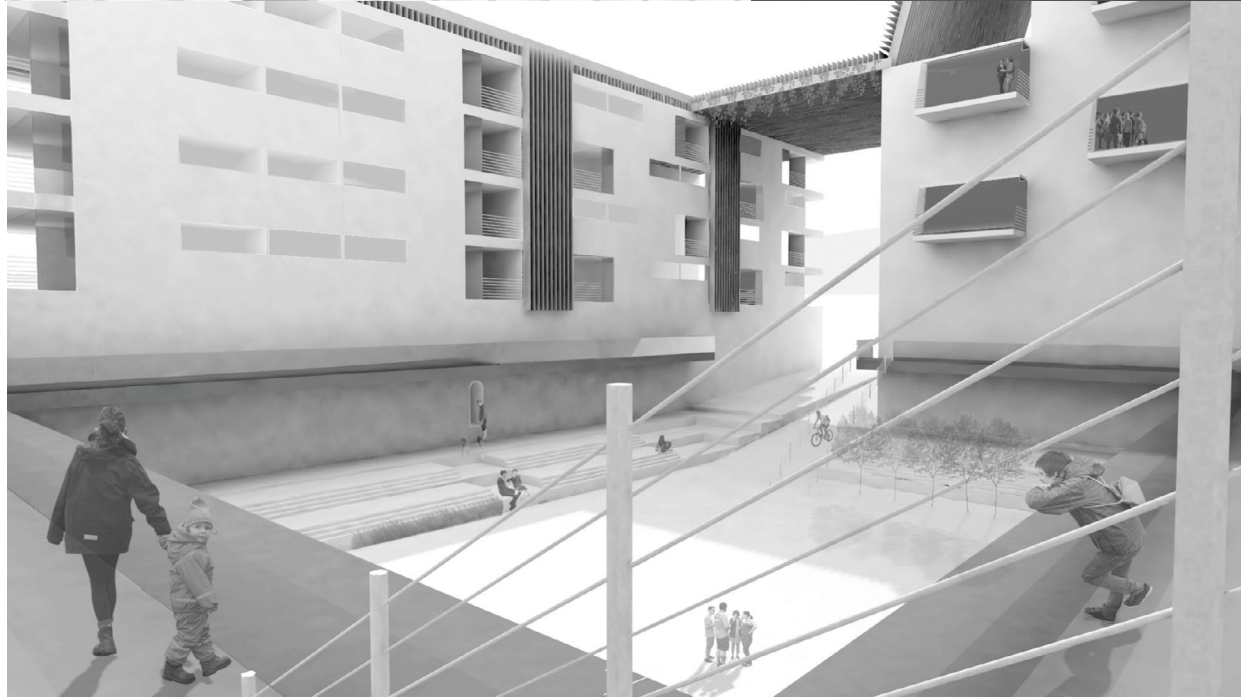


**Site plan:** a spacious lot within Lynchburg's downtown area, three blocks from the riverfront

**Residential interior:** each unit includes an open-air outdoor area (yellow) from which both inner courtyard and outer street are visible. Room function increases in privacy as one moves away from outdoor area

**Floor plan:** bird's-eye view of complex. Courtyard's step-like terrace includes seating.

**Passage diagram:** passage of natural light



**Photo-realistic renderings made in V-ray from Rhino digital models**

**Left:** view from bottom of courtyard

**Right:** view from residential balcony

**Bottom:** view from courtyard's second-level promenade